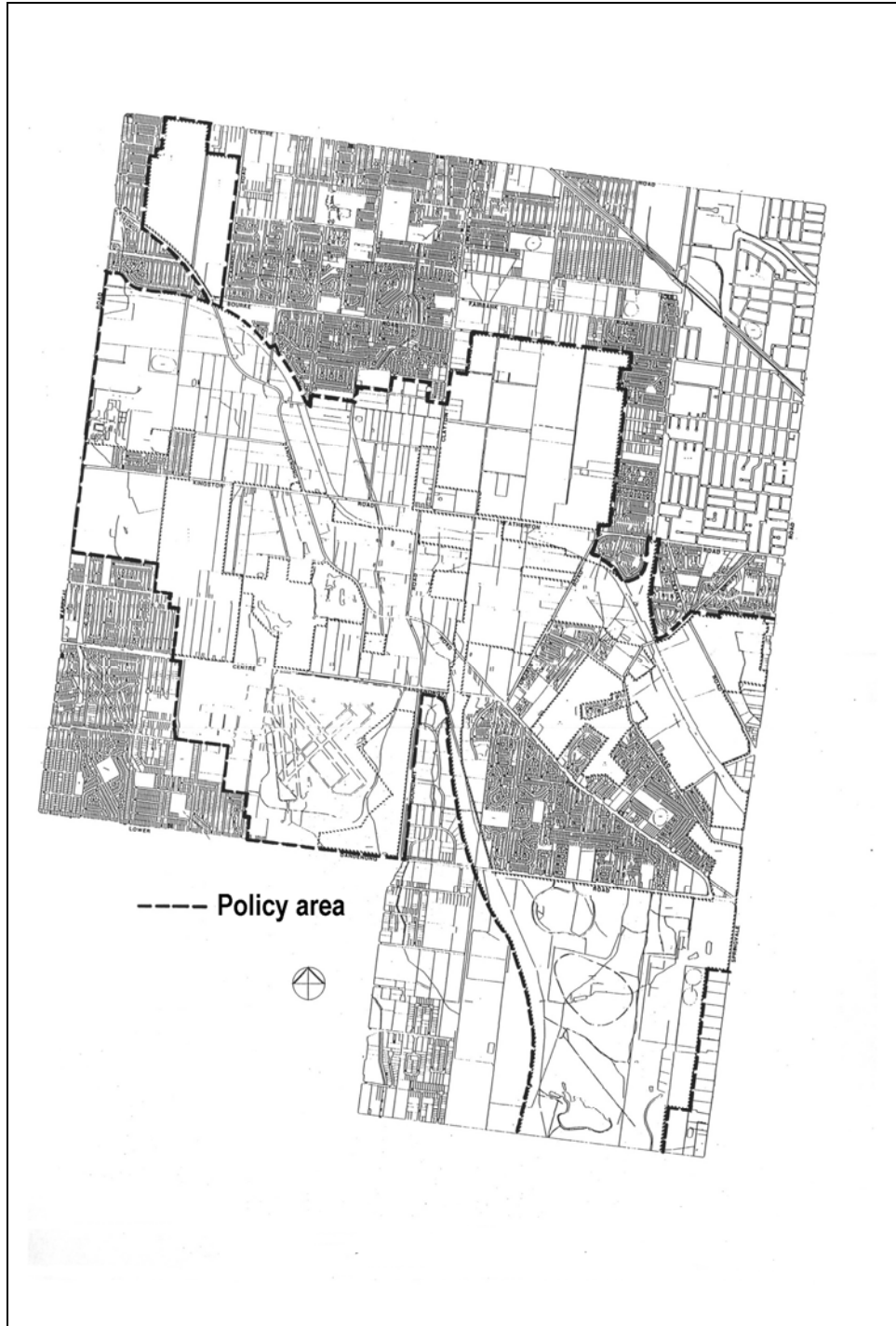


22
07/01/2010
C81
22.01
07/01/2010
C81

LOCAL PLANNING POLICIES

CHAIN OF PARKS

This policy applies to the land identified in the Sandbelt Open Space Project Development Plan (Melbourne Parks and Waterways 1994). The land is shown on the following map (Map 1).



Map 1: Policy Area

22.01-1
07/01/2010
C81

Policy basis

The Municipal Strategic Statement has as an objective the provision of high quality open spaces and recreation facilities which meet the needs of the diverse community and protect and enhance natural assets. It also provides for open space areas to be planned in a regional context. The Chain of Parks concept of a series of connected parks providing for a wide range of regional and local recreation opportunities is shared with the City of Kingston.

This policy gives direction for development and use of the Sandbelt Open Space Area in accordance with the objectives of the Municipal Strategic Statement. The policy provides for a regional approach to planning of the area.

This policy is based on the principles of the Sandbelt Open Space Project Development Plan (Melbourne Parks and Waterways 1994), which forms part of this clause (Map 2)

22.01-2
07/01/2010
C81

Objectives

- To implement the objectives of the Sandbelt Open Space Project Development Plan.
- To promote the development of a series of connected parks providing for a wide range of regional and local recreation opportunities in a quality environment.
- To promote the conversion of rehabilitated extractive industry and landfill sites to open space or other productive uses which are compatible with the Chain of Parks concept.
- To recognise different concepts of leisure and recreation and provide for equitable access to both passive and active recreational pursuits not widely accessible elsewhere.

22.01-3
07/01/2010
C81

Policy

It is policy that the use and development of land:

- Provide for areas to be linked by shared pedestrian, bicycle and equestrian trails, and be integrated with adjoining urban areas. Trail networks should be complemented with planting of indigenous vegetation to effect a wildlife corridor through the Sandbelt Open Space Area.
- Provide for an indigenous vegetation pattern and character.
- Protect and restore areas of local and regional environmental significance, including habitats of flora and fauna, wetlands, wildlife corridors and areas of heritage significance.
- Provide high-quality public and private open space areas which cater for a range of active and passive recreational pursuits and environmental and cultural experiences.
- Provide for contributions of land or facilities to further the implementation of the Sandbelt Open Space Project.
- Assist with the rehabilitation and conversion of redundant extractive industry and landfill sites based on sustainable management principles. Encouragement will be given to uses which are compatible with non-urban land, including open space and recreational uses which complement the Chain of Parks project, or commercial and industrial enterprises which make indirect contributions to the Chain of Parks concept for net community benefit.

22.01-4
07/01/2010
C81

Decision guidelines

It is policy that the following matters be taken into account when considering an application to use or develop land:

- The capability of the land to accommodate the proposed use or development, including soil type and capability, erosion and flood prone areas, salinity and water catchments.
- An assessment of the likely impact on soil and water quality and any impact caused by the emission of noise, dust or odour.
- Whether the proposal is compatible with surrounding land uses and furthers the implementation of the Sandbelt Open Space Project.

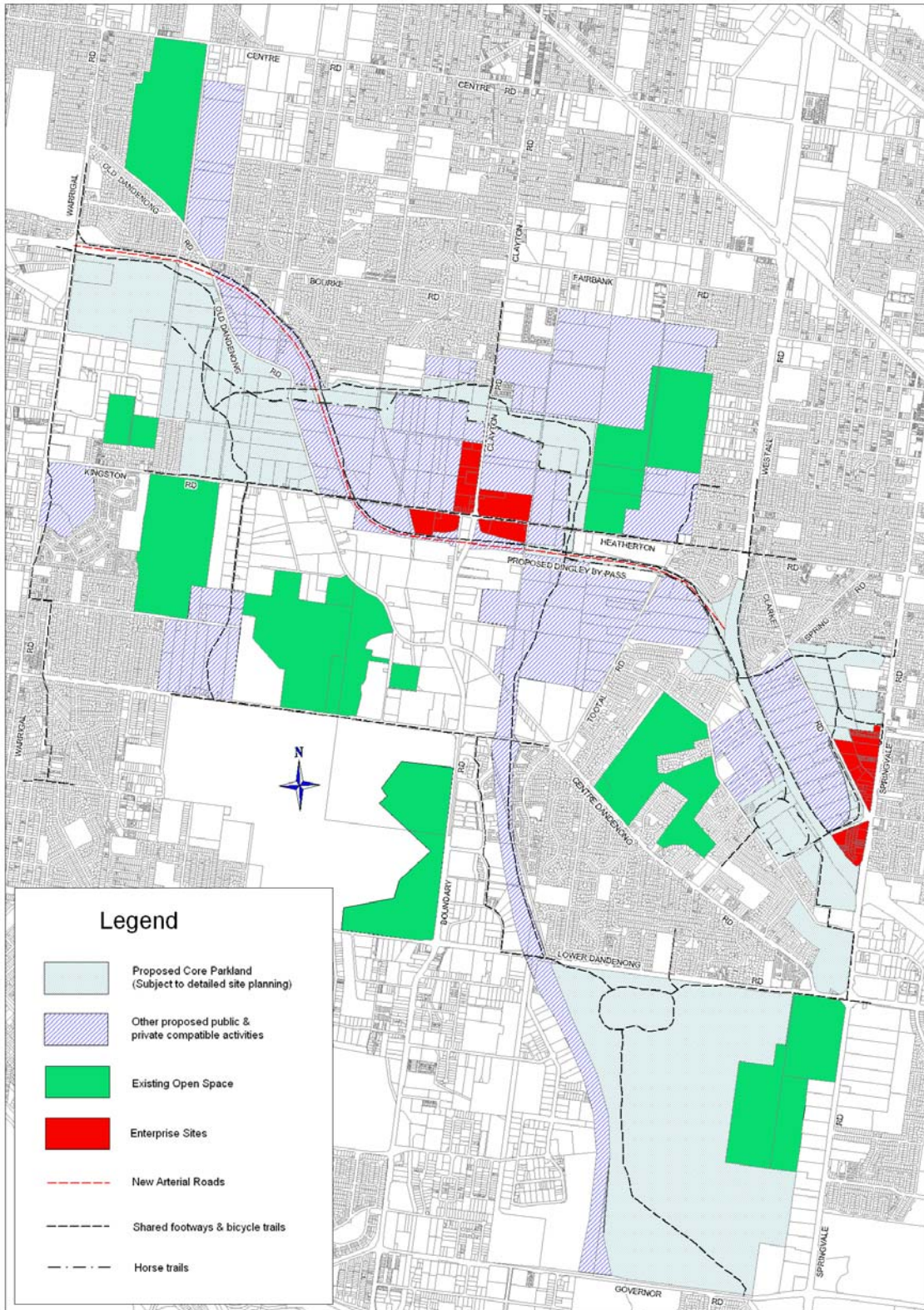
- The impact on the character, appearance and landscape features of the area, including features of architectural, historic and cultural significance.
- The location of land to be set aside as open space and its contribution towards implementation of the Sandbelt Open Space Project.

22.01-5

Policy reference

07/01/2010
C81

Sandbelt Open Space Project Development Plan (Melbourne Parks and Waterways 1994)



Map 2: Sandbelt Open Space Project Development Plan